




MEGARUN

MEGARUN

**MEGARUN
OFF THE ROAD TIRES
PRODUCT GUIDE 2022**

LDSE

 Xishui Industrial Zone, Guangrao County, Dongying City,
Shandong Province, China

 info@megaruntire.com
isales@xingyuangroup.com

 www.megaruntire.com
en.xingyuangroup.com

 +86 546 6497221

MEGARUN tyre has developed the latest OTR and TBR tyre technology in manufacturing, distribution, tyre life cycle management, providing the full range of tyres in most scenarios applications. Megarun Tyre is dedicated to develop a sustainable distribution network globally, with premium quality, a fair and stable pricing strategy, efficient delivery approach and true exclusivity protection of market with latest IoTs tracking technology.

As a MEGARUN's strategic partner, Xingyuan group, founded in 1994, is one of the largest leading tyre manufacturing base in China. Xingyuan group, a diversified business enterprise, is located in Guangrao county of the Shandong province, having more than 6,800 employee, among which over 680 engineering technicians.

MEGARUN R&D team has developed so far 18 series, 160 sizes and 200 tread patterns within our range of all steel radial truck tyre, radial and bias off the road tyres. We have been granted 67 patterns in many districts of the world, including Europe Union, North America and South Africa.

We work to our mission statement which is "Quality is our life, and making our tyre a global world class brand". We have world class production and testing equipment to enable us to produce high quality product. Our tyres have passed certification by many well-known Technical Organisations and Quality Standards including DOT, ECE, REACH, CCC, GCC, SNI, BIS, 9001, ISO14001 etc. Our products are sold to over 100 countries and regions, such as the Middle East, Southeast Asia, Africa, Europe, Latin America and The United States of America. With our high quality product, competitive pricing, on-time delivery and superb after sales service we have a reputation of being a reliable, trustworthy enterprise supplying an excellent product, to both the domestic and export markets. We would like to invite you to join us with a view of developing a long term business relationship.



TKPH/TMPH DEFINITIONS

The Ton kilometre per hour fraction is of great assistance in determining the suitability of a tyre for an operation.

The following factor must be borne in mind with regards the TKPH factor when selecting a tyre Maximum operating TKPH should not exceed the tyre TKPH rating. The average operating TKPH to be calculated after several checks, and should not exceed the tyre TKPH rating.

The TKPH rating data are applicable in the following situations

To all standard, heat or cut-resistant tyres.

Ambient temperature less than 38 C

Maximum trip distance less than 5 km.

Maximum speed of 50 km/h.

TKPH ADJUSTMENTS

The TKPH factor is influenced by heat. When the heat in the tyre increases due to abnormal conditions such as high ambient temperature, speed and overloading the TKPH should be reduced. Similarly adjustments to the TKPH can be made if the ambient temperature or the speeds are low.

TKPH CONVERSION FACTORS

For temperatures in excess of 38C-The TKPH should be reduced by approximately 2% for each degree rise above 38 C

For temperatures lower than 38C-The TKPH should be increase by approximately 1% for each degree below 38 C

Calculating TKPH(to determine actual work rate of an operation)

1.Obtain average of empty and loaded mass per tyre tons for each axle. (If no scales available,use specification sheet masses as best possible estimate).

Mean Tyre Load in Ton=(Empty Mass in kg+Loaded Mass in kg)/(2*1000)

2.Obtain overall length of round trip per haul from an engineer.

3.Obtain number of loads hauled per shift from contractor's load count.

4.Obtain total shift hours from contractor.

5. Calculate overall average speed based on Items 2,3 and 4.

Work Day Average Speed=(Overall round trip length*Number Loads per Shift Shift Hours.

6. Calculate TKPH based on the HEAVIEST loaded tyre in Item 1 and average speed from Item 5.

TKPH=Mean Tyre Load*Work Day Average Speed.

7.If the calculate TKPH requirement is higher than the TKPH rating of the tyre being used,reduce speed and/or load or use a tyre with higher TKPH rating.

MPH AND TKPH EXCHANGE

TMPH=TKPH*1.459

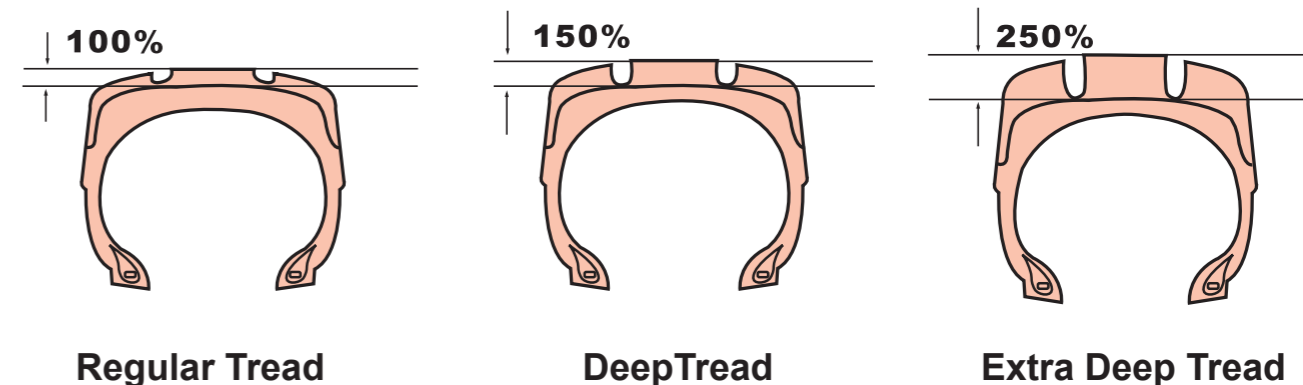
TKPH=TMPH*1.459

CONVERSION TABLE:STAR RATING TO PLY RATING

TRA CODE	Tire Size	Star Ratings	Matched Ply Ratings
Earthmover	13.00R25	★★★	up to 28
	14.00R24	★★★	up to 32
	14.00R25	★★	up to 32
	16.00R25	★★	up to 36
	18.00R25	★★	up to 36
	18.00R33	★★	up to 40
	21.00R33	★★	up to 36
	21.00R35	★★	up to 44
	24.00R35	★★	up to 48
	27.00R49	★★	up to 54
	30.00R51	★★	up to 58
	33.00R51	★★	up to 64
	36.00R51	★★	up to 66
	40.00R57	★★	up to 74
	15.5R25	★★	up to 20
	17.5R25	★★	up to 20
	20.5R25	★★	up to 28
	23.5R25	★★	up to 32
	26.5R25	★★	up to 32
	29.5R25	★★	up to 34
29.5R29	★★	up to 40	
Loader	20.5R25	★★	up to 28
	23.5R25	★★	up to 32
	26.5R25	★★	up to 36
	29.5R25	★★	up to 34
	35/65R33	★★	up to 48
Port	12.00R20	★★	20 PR
	12.00R24	★★	20 PR
	14.00R24	★★★	28 PR
	16.00R25	★★	32 PR
	16.00R25	★★★	36 PR
	18.00R25	★★★	40 PR
18.00R33	★★★	40 PR	

TRA CLASSIFICATION OFF-THE -ROAD TYRES

TRA CODE	TREAD TYPE	PATTERN	SPEED	ONE-WAY DISTANCE
EARTHMOVER SERVICE				
E-2	Traction Regular	LDSE,CRHH,HSMC SNWT,SNWTL,SNWM	50KM/H	4KM
E-3	Rock Regular	LDSE,LDSS,LDWB,DTSC, LDWS,MTBB,MTSD2 MTRS,MTRS16,MTRS4, MTRD6	50KM/H	4KM
E-4	Rock Deep Tread	RDST,RDZT,RDZTS,RDMT RDBS,DTSC,DTSCW,EMTL EMLH,EMRT, EMHD,WAVP	50KM/H	4KM
LOADER&DOZER SERVICE				
L-2	Traction Regular	LDSE,SNWT,SNWTL SNWM	10KM/H(5mph)	76M(250ft)
L-3	Rock Regular	LDSE,LDSEL,LDSS LDWB,DTSC,LDWS	10KM/H(5mph)	76M(250ft)
L-4	Rock Deep Tread	WAVP,TNSC	10KM/H(5mph)	76M(250ft)
L-5	Rock Extra Deep Tread	WAVP5,TNSC5	10KM/H(5mph)	76M(250ft)
L-5S	Smooth Extra Deep Regular	UGSM	10KM/H(5mph)	76M(250ft)
INDUSTRIAL SERVICE				
IND-4	Deep Tread	TPMH	/	/



Regular Tread

Deep Tread

Extra Deep Tread

GIANT TIRE

RDZT



PATTERN CHARACTERISTIC

- Reduced wheel spin in bad conditions.
- Good traction.
- Special abrasion resistance.

SIZE	STAR RATING	LOAD INDEX	TRA CODE	TREAD DEPTH (mm)	TYPE	STD RIM (RIM Width /Flange)	DIAMETER (mm)	SECTION WIDTH(mm)	MAX LOAD(kg)	STD. PRESSURE (bar)	MAX SPEED (km/h)
18.00R33	★★	191	E-4	54	TL	13.00/2.5	1877	498	10900	7.0	50
21.00R35	★★	201	E-4	61	TL	15.00/3.0	2068	572	14500	7.0	50
24.00R35	★★	209	E-4	68	TL	17.00/3.5	2175	653	18500	7.0	50
27.00R49	★★	223	E-4	76	TL	19.50/4.0	2688	734	27250	7.0	50
33.00R51	★★	235	E-4	94	TL	24.00/5.0	3061	912	38750	7.0	50

EMTL



PATTERN CHARACTERISTIC

- Rock-deep tread with tough lug and sidewall protectors.
- Special designed for large dump trucks engaged in earthmoving.
- High resistance to cutting and chipping for tread life.

SIZE	STAR RATING	LOAD INDEX	TRA CODE	TREAD DEPTH (mm)	TYPE	STD RIM (RIM Width /Flange)	DIAMETER (mm)	SECTION WIDTH(mm)	MAX LOAD(kg)	STD. PRESSURE (bar)	MAX SPEED (km/h)
27.00R49		223	E-4	58	TL	19.50/4.0	2702	737	27250	7.0	50
33.00R51		235	E-4	80	TL	24.00/5.0	3061	894	38750	7.0	50
36.00R51		241	E-4	88	TL	26.00/5.0	3233	988	46250	7.0	50

EMLH



PATTERN CHARACTERISTIC

- Extra-long tread life.
- Superior cut resistance.
- Low heat generation.
- Excellent casing durability.

SIZE	STAR RATING	LOAD INDEX	TRA CODE	TREAD DEPTH (mm)	TYPE	STD RIM (RIM Width /Flange)	DIAMETER (mm)	SECTION WIDTH(mm)	MAX LOAD(kg)	STD. PRESSURE (bar)	MAX SPEED (km/h)
27.00R49		223	E-4	61	TL	19.50/4.0	2702	737	27250	7.0	50



GIANT TIRE

EMRT



PATTERN CHARACTERISTIC

- Optimal Tread Pattern.
- Tougher in the Long Run.
- Stable and Long Lasting.
- Heat Dispersion.
- Maximize Life with Minimal Heat Build up.

SIZE	STAR RATING	LOAD INDEX	TRA CODE	TREAD DEPTH (mm)	TYPE	STD RIM (RIM Width /Flange)	DIAMETER (mm)	SECTION WIDTH(mm)	MAX LOAD(kg)	STD. PRESSURE (bar)	MAX SPEED (km/h)
30.00R51	★★	230	E-4	64	TL	22.00/4.5	2904	823	33500	7.0	50

EMHD



PATTERN CHARACTERISTIC

- Optimal Tread Pattern.
- Tougher in the Long Run.
- Stable and Long Lasting.
- Heat Dispersion.
- Maximize Life with Minimal Heat Build up.

SIZE	STAR RATING	LOAD INDEX	TRA CODE	TREAD DEPTH (mm)	TYPE	STD RIM (RIM Width /Flange)	DIAMETER (mm)	SECTION WIDTH(mm)	MAX LOAD(kg)	STD. PRESSURE (bar)	MAX SPEED (km/h)
30.00R51	★★	230	E-4	64	TL	22.00/4.5	2904	823	33500	7.0	50
33.00R51	★★	235	E-4	70	TL	24.00/5.0	3061	894	38750	7.0	50
36.00R51	★★	241	E-4	78	TL	26.00/5.0	3233	988	46250	7.0	50

EMTC



PATTERN CHARACTERISTIC

- Optimal Tread Pattern.
- Tougher in the Long Run.
- Stable and Long Lasting.
- Heat Dispersion.
- Maximize Life with Minimal Heat Build up.

SIZE	STAR RATING	LOAD INDEX	TRA CODE	TREAD DEPTH (mm)	TYPE	STD RIM (RIM Width /Flange)	DIAMETER (mm)	SECTION WIDTH(mm)	MAX LOAD(kg)	STD. PRESSURE (bar)	MAX SPEED (km/h)
46/90R57	★★	252	E-4	100	TL	29.00/6.0	3564	1180	63000	7.0	50



UNDERGROUND MINING

UGSM



PATTERN CHARACTERISTIC

- Extremely smooth deep tread and robust shoulders.
- Sidewall protection ensure an excellent defence against shock ruptures.
- Excellent tread tearing resistance.
- Supper cut-resistance compound.

SIZE	STAR RATING	LOAD INDEX	TRA CODE	TREAD DEPTH (mm)	TYPE	STD RIM (RIM Width /Flange)	DIAMETER (mm)	SECTION WIDTH(mm)	MAX LOAD(kg)	STD. PRESSURE (bar)	MAX SPEED (km/h)
12.00R24	★★	175	L-5S	55	TT/TL	8.5	1255	315	6900	8.0	10
17.5R25	★★	182	L-5S	65	TT/TL	14.00/1.5	1399	445	8500	6.5	10
20.5R25	★★	193	L-5S	72	TL	17.00/2.0	1548	521	11500	6.5	10
20.5R25	★★★	200	L-5S	72	TL	17.00/2.0	1548	521	14000	8.0	10
23.5R25	★★	201	L-5S	83	TL	19.50/2.5	1673	597	14500	6.5	10
26.5R25	★★	209	L-5S	90	TL	22.00/3.0	1808	673	18500	6.5	10
29.5R25	★★	216	L-5S	100	TL	25.00/3.5	1921	750	22400	6.5	10
29.5R29	★★	218	L-5S	100	TL	25.00/3.5	2023	750	23600	6.5	10
18.00R25	★★	204	L-5S	80	TL	13.00/2.5	1655	515	16000	8.25	10
35/65R33	★★	224	L-5S	97	TL	28.00/3.5	2065	889	28000	6.5	10

TNSC5



PATTERN CHARACTERISTIC

- Excellent traction.
- Superb side-cut resistance.
- Better riding comfort.
- Long tread life (L-5 tread class).
- Superb side-cut resistance.

SIZE	STAR RATING	LOAD INDEX	TRA CODE	TREAD DEPTH (mm)	TYPE	STD RIM (RIM Width /Flange)	DIAMETER (mm)	SECTION WIDTH(mm)	MAX LOAD(kg)	STD. PRESSURE (bar)	MAX SPEED (km/h)
17.5R25	★★	182	L-5	68	TT	14.00/1.5	1399	445	8500	6.5	10
17.5R25	★★★	193	L-5	68	TT	14.00/1.5	1399	445	11500	8.0	10
20.5R25	★★	193	L-5	78	TL	17.00/2.0	1548	521	11500	6.5	10
23.5R25	★★	201	L-5	87	TL	19.50/2.5	1673	597	14500	6.5	10
26.5R25	★★	209	L-5	96	TL	22.00/3.0	1798	673	18500	6.5	10
26.5R25	★★★	213	L-5	96	TL	22.00/3.0	1808	673	20600	8.0	10
29.5R25	★★	216	L-5	104	TL	25.00/3.5	1921	750	22400	6.5	10
29.5R29	★★	218	L-5	104	TL	25.00/3.5	2023	750	23600	6.5	10
35/65R33	★★	224	L-5	97	TL	28.00/3.5	2065	889	28000	6.5	10
35/65R33	★★★★	225/229	L-5	97	TL	28.00/3.5	2065	889	29000/32500	8.0	10/40

DUMP TRUCK

DTSC/DTSCW



PATTERN CHARACTERISTIC

- Superior riding comfort.
- Optimum traction and self-cleaning.
- Exceptional stability.
- Three different compounds C1,R1,CS, for diverse working conditions.

SIZE	STAR RATING	LOAD INDEX	TRA CODE	TREAD DEPTH (mm)	TYPE	STD RIM (RIM Width /Flange)	DIAMETER (mm)	SECTION WIDTH(mm)	MAX LOAD(kg)	STD. PRESSURE (bar)	MAX SPEED (km/h)
23.5R25	★★	185	E-4	48	TT	19.50/2.5	1673	597	9250	5.25	10
26.5R25	★★	193	E-4	52	TT	22.00/3.0	1798	673	11500	5.25	10
29.5R25	★★	200	E-4	57	TL	25.00/3.5	1921	750	14000	5.25	10
29.5R29	★★	202	E-4	57	TL	25.00/3.5	2023	750	15000	5.25	10
* 16.00R25	★★	177	E-4	46	TL	11.25/2.0	1532	448	7300	7.0	10
* 875/65R29	★★★	214/203	L-3/E-3	52.5	TL	28.00/3.5	1840	900	21200/15500	4.75	10/50
* 875/65R29	★★	218/213	L-3/E-3	52.5	TL	28.00/3.5	1840	900	23600/20600	6.5	10/50
* 600/65R29	★★	187/178	L-3/E-3	35.5	TL	19.50/2.5	1395	610	9750/7500	4.75	10/50
* 650/65R29	★★	193/180	L-3/E-3	35.5	TL	19.50/2.5	1475	640	11500/8000	4.75	10/50
* 750/65R29	★★	202/190	L-3/E-3	44.5	TL	24.00/3.0	1590	735	15000/10600	4.75	10/50

**Only for BDTs
* Only for BDTs2

RDST



Regid Dumper Truck



PATTERN CHARACTERISTIC

- Extra-deep grooves with strong traction.
- Travel over soft and muddy terrain.
- Cool running innovative tread rubber compound.
- Cut and speed resistance compound

SIZE	STAR RATING	LOAD INDEX	TRA CODE	TREAD DEPTH (mm)	TYPE	STD RIM (RIM Width /Flange)	DIAMETER (mm)	SECTION WIDTH(mm)	MAX LOAD(kg)	STD. PRESSURE (bar)	MAX SPEED (km/h)
14.00R24	★★★	168	E-4	38	TL	10	1418	383	5600	8.0	50
14.00R25	★★★	168	E-4	38	TL	10.00/1.5	1418	383	5600	8.0	50
18.00R25	★★	185	E-4	47	TL	13.00/2.5	1673	498	9250	7.0	50

RDMT



Regid Dumper Truck



PATTERN CHARACTERISTIC

- Extra-deep grooves with strong traction.
- Travel over soft and muddy terrain.
- Cool running innovative tread rubber compound.
- Cut and speed resistance compound

SIZE	STAR RATING	LOAD INDEX	TRA CODE	TREAD DEPTH (mm)	TYPE	STD RIM (RIM Width /Flange)	DIAMETER (mm)	SECTION WIDTH(mm)	MAX LOAD(kg)	STD. PRESSURE (bar)	MAX SPEED (km/h)
18.00R25		185	E-4	38	TL	13.00/2.5	1673	498	9250	7.0	50
18.00R33		191	E-4	38	TL	13.00/2.5	1877	498	10900	7.0	50
21.00R33		200	E-4	47	TL	15.00/3.0	1960	570	14000	7.0	50

RDBS  Regid Dumper Truck

PATTERN CHARACTERISTIC

- Cool running innovative tread rubber compound.
- Longer lasting casing and bead.
- An exclusive manufacturing process allowing for the optimal curing of the bead area.
- Providing reduced rubber tension for better resistance to cuts.



SIZE	STAR RATING	LOAD INDEX	TRA CODE	TREAD DEPTH (mm)	TYPE	STD RIM (RIM Width /Flange)	DIAMETER (mm)	SECTION WIDTH(mm)	MAX LOAD(kg)	STD. PRESSURE (bar)	MAX SPEED (km/h)
18.00R33	★★	191	E-4	54	TL	13.00/2.5	1877	498	10900	7.0	50
21.00R35	★★	201	E-4	54	TL	15.00/3.0	2052	572	14500	7.0	50
24.00R35	★★	209	E-4	58	TL	17.00/3.5	2160	653	18500	7.0	50

MTBB  Mining Truck

PATTERN CHARACTERISTIC

- Extra deep tread and big pattern blocks.
- High speed durability and heat resistance.
- Mining truck tires on rough condition.
- Small dumping truck application.



SIZE	STAR RATING	LOAD INDEX	TRA CODE	TREAD DEPTH (mm)	TYPE	STD RIM (RIM Width /Flange)	DIAMETER (mm)	SECTION WIDTH(mm)	MAX LOAD(kg)	STD. PRESSURE (bar)	MAX SPEED (km/h)
12.00R24	20PR	156	E-3	30	TT	8.5	1225	315	4000	8.5	50
12.00R24	24PR	161	E-3	30	TT	8.5	1225	315	4625	8.5	50

RDZT  Regid Dumper Truck

PATTERN CHARACTERISTIC

- Reduced wheel spin in bad conditions.
- Good traction.
- Special abrasion resistance.



SIZE	STAR RATING	LOAD INDEX	TRA CODE	TREAD DEPTH (mm)	TYPE	STD RIM (RIM Width /Flange)	DIAMETER (mm)	SECTION WIDTH(mm)	MAX LOAD(kg)	STD. PRESSURE (bar)	MAX SPEED (km/h)
18.00R33	★★	191	E-4	54	TL	13.00/2.5	1877	498	10900	7.0	50
21.00R35	★★	201	E-4	61	TL	15.00/3.0	2068	572	14500	7.0	50
24.00R35	★★	209	E-4	68	TL	17.00/3.5	2175	653	18500	7.0	50
27.00R49	★★	223	E-4	76	TL	19.50/4.0	2688	734	27250	7.0	50
33.00R51	★★	235	E-4	94	TL	24.00/5.0	3061	912	38750	7.0	50

MTRS  Mining Truck

PATTERN CHARACTERISTIC

- Extra deep tread and big pattern blocks.
- High speed durability and heat resistance.
- Mining truck tires on rough condition.
- Small dumping truck application.



13.00R25 14.00R24
14.00R25

SIZE	STAR RATING	LOAD INDEX	TRA CODE	TREAD DEPTH (mm)	TYPE	STD RIM (RIM Width /Flange)	DIAMETER (mm)	SECTION WIDTH(mm)	MAX LOAD(kg)	STD. PRESSURE (bar)	MAX SPEED (km/h)
13.00R25	★★★	163	E-3	28	TT/TL	8.5	1295	338	7000	12.5	50
14.00R24	★★★	169	E-3	28	TT	10.00/1.7	1355	370	10000	12.5	50
14.00R25	★★★	169	E-3	28	TT/TL	10.00/2.0	1355	370	10000	12.5	50

RDZTS  Regid Dumper Truck

PATTERN CHARACTERISTIC

- Superior traction on muddy terrain.
- Recommended for rigid dump trucks.
- Full depth tread blocks.
- Providing reduced rubber tension for better resistance to cuts.



SIZE	STAR RATING	LOAD INDEX	TRA CODE	TREAD DEPTH (mm)	TYPE	STD RIM (RIM Width /Flange)	DIAMETER (mm)	SECTION WIDTH(mm)	MAX LOAD(kg)	STD. PRESSURE (bar)	MAX SPEED (km/h)
18.00R33	★★	191	E-4	49	TL	13.00/2.5	1877	498	10900	7.0	50
21.00R35	★★	201	E-4	52	TL	15.00/3.0	2052	572	14500	7.0	50
24.00R35	★★	209	E-4	58	TL	17.00/3.5	2175	653	18500	7.0	50

MTSD2  Mining Truck

PATTERN CHARACTERISTIC

- Extra deep tread and big pattern blocks.
- High speed durability and heat resistance.
- Mining truck tires on rough condition.



SIZE	STAR RATING	LOAD INDEX	TRA CODE	TREAD DEPTH (mm)	TYPE	STD RIM (RIM Width /Flange)	DIAMETER (mm)	SECTION WIDTH(mm)	MAX LOAD(kg)	STD. PRESSURE (bar)	MAX SPEED (km/h)
14.00R25	★★★★	169	E-4	34	TT	8.5	1295	338	7000	12.5	50

DUMP TRUCK

MTRS16



PATTERN CHARACTERISTIC

- Extra deep tread and big pattern blocks.
- High speed durability and heat resistance.
- Mining truck tires on rough condition.
- Small dumping truck application.

SIZE	STAR RATING	LOAD INDEX	TRA CODE	TREAD DEPTH (mm)	TYPE	STD RIM (RIM Width /Flange)	DIAMETER (mm)	SECTION WIDTH(mm)	MAX LOAD(kg)	STD. PRESSURE (bar)	MAX SPEED (km/h)
14.00R25	★★★	169	E-3	28	TT	10.00/2.0	1362	367	10000	12.5	50

MTRS4



PATTERN CHARACTERISTIC

- Extra deep tread and big pattern blocks.
- High speed durability and heat resistance.
- Mining truck tires on rough condition.
- Small dumping truck application.

SIZE	STAR RATING	LOAD INDEX	TRA CODE	TREAD DEPTH (mm)	TYPE	STD RIM (RIM Width /Flange)	DIAMETER (mm)	SECTION WIDTH(mm)	MAX LOAD(kg)	STD. PRESSURE (bar)	MAX SPEED (km/h)
14.00R25	★★★★	169	E-4	34	TT	10.00/2.0	1364	370	10000	12.5	50

MTRD6

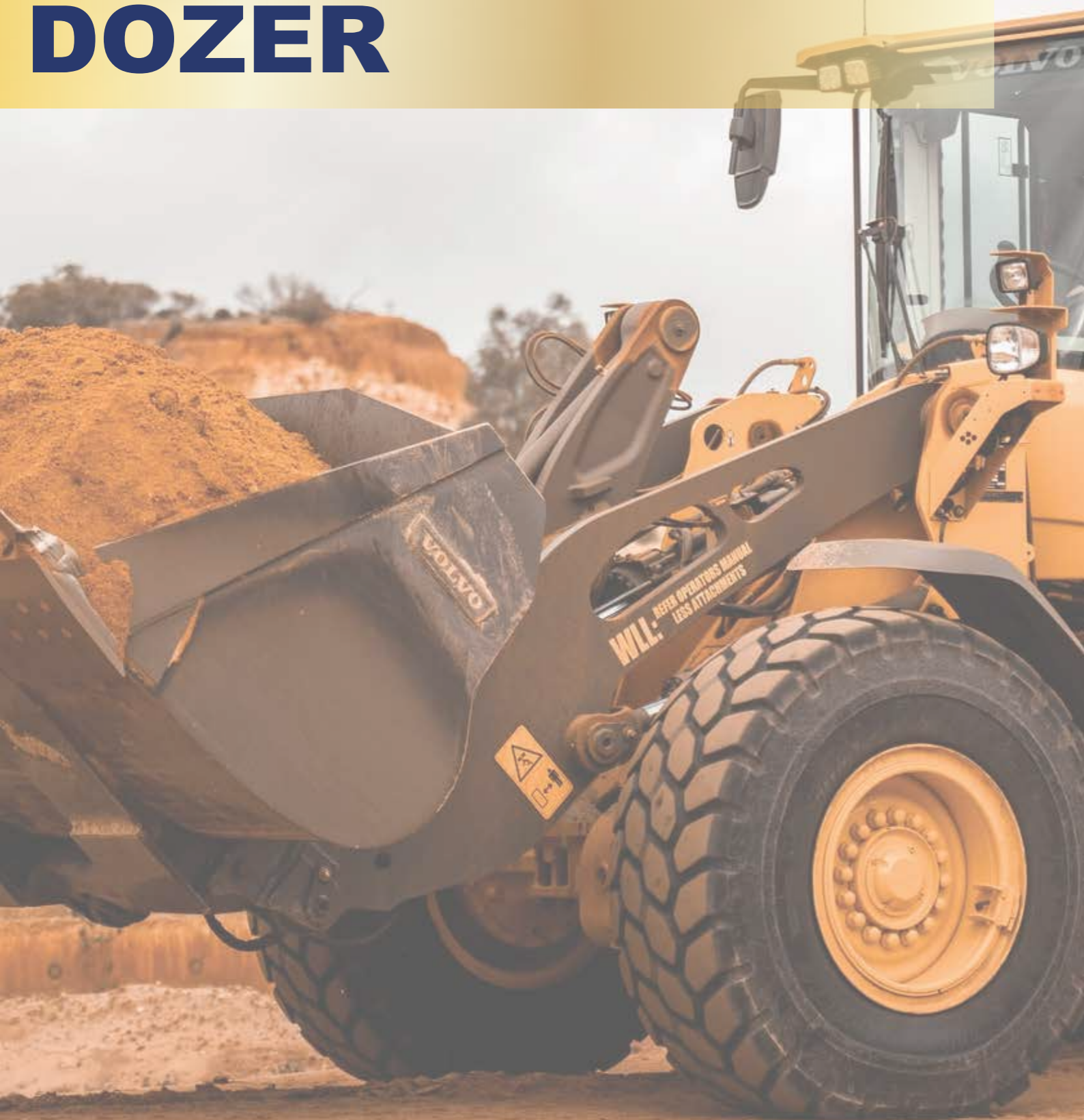


PATTERN CHARACTERISTIC

- Extra deep tread and big pattern blocks.
- High speed durability and heat resistance.
- Mining truck tires on rough condition.
- Small dumping truck application.

SIZE	STAR RATING	LOAD INDEX	TRA CODE	TREAD DEPTH (mm)	TYPE	STD RIM (RIM Width /Flange)	DIAMETER (mm)	SECTION WIDTH(mm)	MAX LOAD(kg)	STD. PRESSURE (bar)	MAX SPEED (km/h)
14.00R25	★★★★	169	E-4	40	TT	10.00/2.0	1386	367	10000	12.5	50

LOADER, GRADER, DOZER



LDSE/LDSEL



PATTERN CHARACTERISTIC

- Increased tread volume for additional wear life and resistance to damage.
- New sidewall design for enhanced reinforcement and protection.
- Robust shoulder design and strong casing reliability.

	SIZE	STAR RATING	LOAD INDEX	TRA CODE	TREAD DEPTH (mm)	TYPE	STD RIM (RIM Width /Flange)	DIAMETER (mm)	SECTION WIDTH(mm)	MAX LOAD(kg)	STD. PRESSURE (bar)	MAX SPEED (km/h)
LDSE	15.5R25	**	176/160	L-2/E-2	25	TT	12.00/1.3	1277	394	7100/4500	6.5/5.25	10/50
	17.5R25	**	182/167	L-3/E-3	28	TT	14.00/1.5	1348	445	8500/5450	6.5/5.25	10/50
	20.5R25	**	193/177	L-3/E-3	31	TL	17.00/2.0	1490	521	11500/7300	6.5/5.25	10/50
	23.5R25	**	201/185	L-3/E-3	34	TL	19.50/2.5	1617	597	14500/9250	6.5/5.25	10/50
	26.5R25	**	209/193	L-3/E-3	37	TL	22.00/3.0	1750	673	18500/11500	6.5/5.25	10/50
LDSEL	20.5R25	***	193/177	L-3/E-3	31	TL	17.00/2.0	1490	521	16500/7300	6.5/5.25	10/50
	20.5R25	**	193	L-3	31	TL	17.00/2.0	1490	521	11500	6.5	10
	23.5R25	**	201	L-3	31	TL	19.50/2.5	1617	597	14500	6.5	10
	26.5R25	**	209	L-3	37	TL	22.00/3.0	1750	673	18500	6.5	10
	17.5R25	**	182	L-3	28	TL	14.00/1.5	1348	445	8500	6.5	10

LDSS



PATTERN CHARACTERISTIC

- Increased tread volume for additional wear life and resistance to damage.
- New sidewall design for enhanced reinforcement and protection.
- Robust shoulder design and strong casing reliability.

	SIZE	STAR RATING	LOAD INDEX	TRA CODE	TREAD DEPTH (mm)	TYPE	STD RIM (RIM Width /Flange)	DIAMETER (mm)	SECTION WIDTH(mm)	MAX LOAD(kg)	STD. PRESSURE (bar)	MAX SPEED (km/h)
	23.5R25	**	201/185	L-3/E-3	34	TL	19.50/2.5	1617	597	14500/9250	6.5/5.25	10/50
	23.5R25	***	206/189	L-3/E-3	34	TL	19.50/2.5	1617	597	17000/10300	8.0/6.75	10/50
	26.5R25	**	209/193	L-3/E-3	37	TL	22.00/3.0	1750	673	18500/11500	6.5/5.25	10/50
	29.5R25	**	216/200	L-3/E-3	43.5	TL	25.00/3.5	1873	750	22400/14000	6.5/5.25	10/50
	29.5R25	***	221/204	L-3/E-3	43.5	TL	25.00/3.5	1873	750	25750/16000	8.0	10/50
	29.5R29	**	218/202	L-3/E-3	43.5	TL	25.00/3.5	1975	750	23600/15000	6.5/5.25	10/50
	29.5R29	***	223/206	L-3/E-3	43.5	TL	25.00/3.5	1975	750	27250/17000	8.0	10/50
	16.00R25	**	177	E-3	34	TL	11.25/2.0	1532	448	7300	7.0	10/50
	26.5R25	***	214	L-3	37	TL	22.00/3.0	1750	673	21200	8.0	10/50

LOADER, GRADER, DOZER



LDWT



PATTERN CHARACTERISTIC

- Wide tread pattern design and low profile case.
- Catching mud and powerful traction.
- Driving stable and comfortable.

SIZE	STAR RATING	LOAD INDEX	TRA CODE	TREAD DEPTH (mm)	TYPE	STD RIM (RIM Width /Flange)	DIAMETER (mm)	SECTION WIDTH(mm)	MAX LOAD(kg)	STD. PRESSURE (bar)	MAX SPEED (km/h)
600/65R25	★★	187/178	L-3/E-3	35.5	TL	19.50/2.5	1395	610	9750/7500	4.75	10/50
650/65R25	★★	193/180	L-3/E-3	38.5	TL	19.50/2.5	1475	640	11500/8000	4.75	10/50
750/65R25	★★	202/190	L-3/E-3	44.5	TL	24.00/3.0	1590	735	15000/10600	4.75	10/50
16.00R25	★★	177	E-4	44	TL	11.25/2.0	1532	448	7300	7.0	50
875/65R29	★★	214/203	L-3/E-3	52.5	TL	28.00/3.5	1845	900	21200/15500	4.75	10/50
875/65R29	★★★	218/213	L-3/E-3	52.5	TL	28.00/3.5	1850	900	23600/20600	6.5	10/50

LDXA



PATTERN CHARACTERISTIC

- Excellent traction and maneuverability.
- Lug design assures smooth mud.
- Stone rejection from the grooves.
- Supper E-3 tread pattern depth

SIZE	STAR RATING	LOAD INDEX	TRA CODE	TREAD DEPTH (mm)	TYPE	STD RIM (RIM Width /Flange)	DIAMETER (mm)	SECTION WIDTH(mm)	MAX LOAD(kg)	STD. PRESSURE (bar)	MAX SPEED (km/h)
17.5R25	★★	182/167	L-3/E-3	28	TL	14.00/1.5	1348	445	8500/5450	6.5/5.25	10/50
20.5R25	★★	193/177	L-3/E-3	31	TL	17.00/2.0	1490	521	11500/7300	6.5/5.25	10/50
23.5R25	★★	201/185	L-3/E-3	42.5	TL	19.50/2.5	1617	597	14500/9250	6.5/5.25	10/50
26.5R25	★★	209/193	L-3/E-3	45	TL	22.00/3.0	1770	673	18500/11500	6.5/5.25	10/50
29.5R25	★★	216/200	L-3/E-3	48	TL	25.00/3.5	1873	750	22400/14000	6.5/5.25	10/50

TNSC5



PATTERN CHARACTERISTIC

- Excellent traction.
- Superb side-cut resistance.
- Better riding comfort.
- Long tread life (L-5 tread class).
- Superb side-cut resistance.

SIZE	STAR RATING	LOAD INDEX	TRA CODE	TREAD DEPTH (mm)	TYPE	STD RIM (RIM Width /Flange)	DIAMETER (mm)	SECTION WIDTH(mm)	MAX LOAD(kg)	STD. PRESSURE (bar)	MAX SPEED (km/h)
17.5R25	★★	182/167	L-3/E-3	28	TL	14.00/1.5	1348	445	8500/5450	6.5/5.25	10/50
20.5R25	★★	193/177	L-3/E-3	31	TL	17.00/2.0	1490	521	11500/7300	6.5/5.25	10/50
23.5R25	★★	201/185	L-3/E-3	42.5	TL	19.50/2.5	1617	597	14500/9250	6.5/5.25	10/50
26.5R25	★★	209/193	L-3/E-3	45	TL	22.00/3.0	1770	673	18500/11500	6.5/5.25	10/50
29.5R25	★★	216/200	L-3/E-3	48	TL	25.00/3.5	1873	750	22400/14000	6.5/5.25	10/50

LOADER, GRADER, DOZER



WAVP



PATTERN CHARACTERISTIC

- Exceptionally robust in masacre conditions.
- Excellent compromise of adhesion and traction.
- Very substantial, wide and aggressive tread functions.
- Resistant to shock ruptures, cuts and tread tearing.
- A particularly resilient casing with the addition of several specific steel belts.

SIZE	STAR RATING	LOAD INDEX	TRA CODE	TREAD DEPTH (mm)	TYPE	STD RIM (RIM Width /Flange)	DIAMETER (mm)	SECTION WIDTH(mm)	MAX LOAD(kg)	STD. PRESSURE (bar)	MAX SPEED (km/h)
23.5R25	★★	201/185	L-4/E-4	47	TL	19.50/2.5	1673	597	14500/9250	6.5/5.25	10/50
26.5R25	★★	209/193	LV/EV	57	TL	22.00/3.0	1798	673	18500/11500	6.5/5.25	10/50
29.5R29	★★	218/202	LV/EV	60	TL	25.00/3.5	2023	750	23600/15000	6.5/5.25	10/50
35/65R33	★★	224/207	L-4/E-4	62.5	TL	28.00/3.5	2040	889	28000/17500	6.5/5.25	10/50

WAVP5



PATTERN CHARACTERISTIC

- Exceptionally robust in masacre conditions.
- Excellent compromise of adhesion and traction.
- Very substantial, wide and aggressive tread functions.
- Resistant to shock ruptures, cuts and tread tearing.
- A particularly resilient casing with the addition of several specific steel belts.

SIZE	STAR RATING	LOAD INDEX	TRA CODE	TREAD DEPTH (mm)	TYPE	STD RIM (RIM Width /Flange)	DIAMETER (mm)	SECTION WIDTH(mm)	MAX LOAD(kg)	STD. PRESSURE (bar)	MAX SPEED (km/h)
20.5R25	★★	193	L-5	72	TL	17.00/2.0	1548	521	11500	6.5	10
23.5R25	★★	201	L-5	78	TL	19.50/2.5	1673	597	14500	6.5	10
26.5R25	★★	209	L-5	87	TL	22.00/3.0	1798	673	18500	6.5	10
29.5R25	★★	216	L-5	95	TL	25.00/3.5	1921	750	22400	6.5	10
29.5R29	★★	218	L-5	95	TL	25.00/3.5	2023	750	23600	6.5	10
35/65R33	★★	224	L-5	97	TL	28.00/3.5	2065	889	28000	6.5	10

TNSC



PATTERN CHARACTERISTIC

- Excellent traction.
- Superb side-cut resistance.
- Better riding comfort.
- Long tread life (L-4 tread class).
- Superb side-cut resistance.

SIZE	STAR RATING	LOAD INDEX	TRA CODE	TREAD DEPTH (mm)	TYPE	STD RIM (RIM Width /Flange)	DIAMETER (mm)	SECTION WIDTH(mm)	MAX LOAD(kg)	STD. PRESSURE (bar)	MAX SPEED (km/h)
23.5R25	★★	201	L-4	51	TL	19.50/2.5	1673	597	14500	6.5	10
26.5R25	★★	209	L-4	60	TL	22.00/3.0	1798	673	18500	6.5	10
29.5R25	★★	216	L-4	66.5	TL	25.00/3.5	1921	750	22400	6.5	10
35/65R33	★★	224	L-4	62.5	TL	28.00/3.5	2065	889	28000	6.5	10



CRANE

CRHH



Crane



Fire & Rescue



Flatbed



PATTERN CHARACTERISTIC

- Heat resistance compound and high speed durability.
- Providing reduced rubber tension for better resistance to cuts.
- Up to 10% additional tread volume.

SIZE	STAR RATING	LOAD INDEX	TRA CODE	TREAD DEPTH (mm)	TYPE	STD RIM (RIM Width /Flange)	DIAMETER (mm)	SECTION WIDTH(mm)	MAX LOAD(kg)	STD. PRESSURE (bar)	MAX SPEED (km/h)
14.00R24 (385/95R24)	★★★	170	E-2	23	TT	10.00/1.5	1356	382	6000	10	70
14.00R25 (385/95R25)	★★★	170	E-2	23	TL	10.00/1.5	1356	382	6000	10	70
16.00R25 (445/95R25)	★★★	174/177	E-2	28	TL	11.25/2.0	1493	432	6700/7300	10	80/70
17.5R25 (445/80R25)	★★★	170	E-2	28	TL	14.00/1.5	1348	445	6000	8.0	70
20.5R25 (525/80R25)	★★★	179	E-2	31	TL	17.00/2.0	1490	521	7750	8.0	70
18.00R25 (505/95R25)	★★★	186	E-2	28	TL	13.00/2.5	1615	498	9500	9.0	70

HSMC



Crane



Fire & Rescue



Flatbed



PATTERN CHARACTERISTIC

- Heat resistance compound and high speed durability.
- Providing reduced rubber tension for better resistance to cuts.
- Up to 10% additional tread volume.

SIZE	STAR RATING	LOAD INDEX	TRA CODE	TREAD DEPTH (mm)	TYPE	STD RIM (RIM Width /Flange)	DIAMETER (mm)	SECTION WIDTH(mm)	MAX LOAD(kg)	STD. PRESSURE (bar)	MAX SPEED (km/h)
14.00R24 (385/95R24)		170	E-2	23	TT	10.00/1.5	1368	382	6000	10	70
14.00R25 (385/95R25)		170	E-2	23	TL	10.00/1.5	1368	382	6000	10	70
16.00R25											



SNOW TIRE

SNWT/SNWTL



PATTERN CHARACTERISTIC

- Snow compound for SNOW&ICE road.
- Excellent traction in snow condition.
- Light construction for loader only.
- High speed durability.

	SIZE	STAR RATING	LOAD INDEX	TRA CODE	TREAD DEPTH (mm)	TYPE	STD RIM (RIM Width /Flange)	DIAMETER (mm)	SECTION WIDTH(mm)	MAX LOAD(kg)	STD. PRESSURE (bar)	MAX SPEED (km/h)
SNWT	15.5R25	★★	176/160	L-2/E-2	25	TL	12.00/1.3	1277	394	7100/4500	6.5/5.25	10/50
	16.0R25	★★★	174/177	E-2	28	TL	11.25/2.0	1493	432	6700/7300	7.0	80/70
	17.5R25	★★	182/167	L-2/E-2	28	TL	14.00/1.5	1348	445	8500/5450	6.5/5.25	10/50
	20.5R25	★★	193/177	L-2/E-2	31	TL	17.00/2.0	1490	521	11500/7300	6.5/5.25	10/50
	23.5R25	★★	201/185	L-2/E-2	34	TL	19.50/2.5	1617	597	14500/9250	6.5/5.25	10/50
SNWTL	26.5R25	★★	209/193	L-2/E-2	37	TL	22.00/3.0	1750	673	18500/11500	6.5/5.25	10/50
	29.5R25	★	216/200	L-2/E-2	43.5	TL	25.00/3.5	1873	750	22400/14000	6.5/5.25	10/50
	14.00R24	★★★	175/153	G-2/L-2	23	TL	10.00/1.5	1352	373	6900/3650	10	10/40
	14.00R25	★★	170	E-2	23	TL	10.00/1.5	1352	373	6000	10	70
	17.5R25	★★	182/167	L-2/E-2	28	TL	14.00/1.5	1348	445	8500/5450	6.5/5.25	10/50

SNWM



PATTERN CHARACTERISTIC

- Multiple sipes and offset shoulder.
- Excellent traction on mud, snow and ice.
- Open shoulder for self-clean in mud or snow.

	SIZE	STAR RATING	LOAD INDEX	TRA CODE	TREAD DEPTH (mm)	TYPE	STD RIM (RIM Width /Flange)	DIAMETER (mm)	SECTION WIDTH(mm)	MAX LOAD(kg)	STD. PRESSURE (bar)	MAX SPEED (km/h)
	17.5R25	★★	182/167	L-2/E-2	29	TL	14.00/1.5	1348	445	8500/5450	6.5/5.25	10/50
	20.5R25	★★	193/177	L-2/E-2	32	TL	17.00/2.0	1490	521	11500/7300	6.5/5.25	10/50
	23.5R25	★★	201/185	L-2/E-2	35	TL	19.50/2.5	1617	597	14500/9250	6.5/5.25	10/50
